

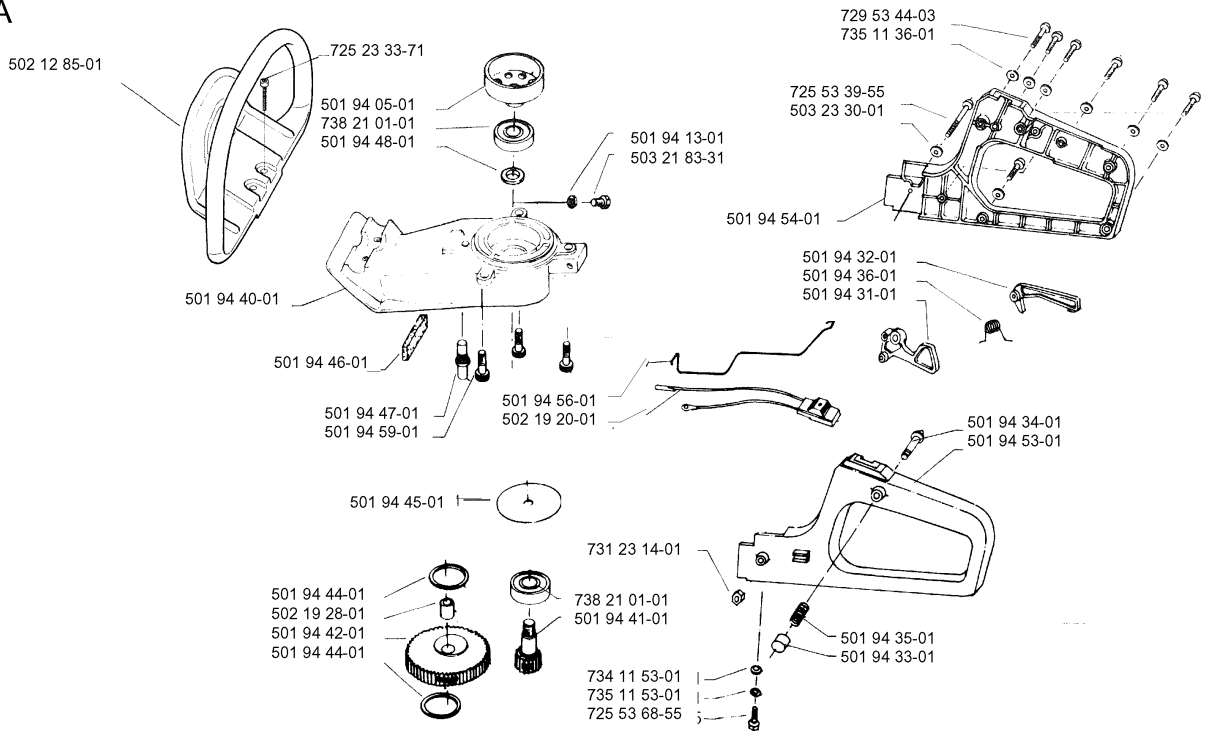


# SPARE PARTS LIST

HEDGE TRIMMERS/POLE HEDGE  
TRIMMERS

16H, 1990-02

A

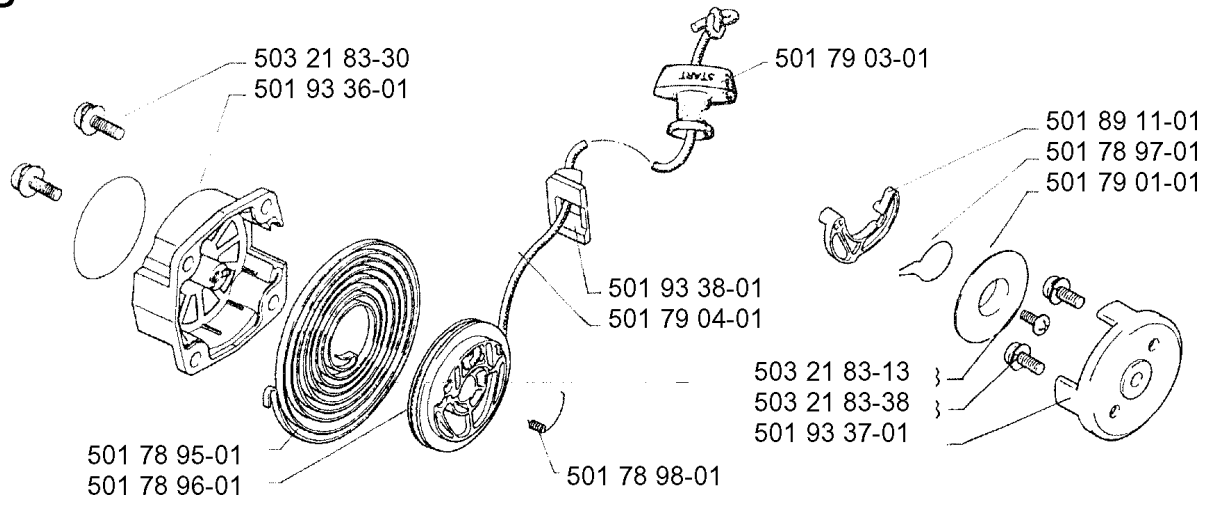


## HANDLE

16H, 1990-02

Part No	Description	Remark	QTY KIT
501 94 05-01	CLUTCH DRUM ASSY		1
501 94 13-01	WASHER		1
501 94 31-01	TRIGGER THROTTLE CONTROL		1
501 94 32-01	THROTTLE LOCKOUT		1
501 94 33-01	STARTER THROTTLE LOC		1
501 94 34-01	PINNE HÄCKSAX		1
501 94 35-01	SPRING		1
501 94 36-01	SPRING		1
501 94 40-01	GEAR HOUSING		1
501 94 41-01	PINION		1
501 94 42-01	GEAR WHEEL		1
501 94 44-01	DISTANCE		1
501 94 44-01	DISTANCE		1
501 94 45-01	INTERLAYER		1
501 94 46-01	GASKET		1
501 94 47-01	PINNE HÄCKSAX		1
501 94 48-01	SLEEVE		1
501 94 53-01	HANDLE		1
501 94 54-01	HANDLE		1
501 94 56-01	THROTTLE WIRE		1
501 94 59-01	HANDLE		1
502 12 85-01	HANDLE ASSY		1
502 19 20-01	STOP SWITCH		1
502 19 28-01	SUPPORT BUSHING		1
503 21 83-31	SCREW		1
503 23 30-01	WASHER		1
725 23 33-71	SCREW EHHM		1
725 53 39-55	SCREW IHSCM		1
725 53 68-55	SCREW IHSCM		1
729 53 44-03	TAPPING SCREW		1
731 23 14-01	HEXAGON NUT		1
734 11 53-01	WASHER		1
735 11 36-01	SPRING WASHER 4.1X7.1		1
735 11 53-01	WASHER		1
738 21 01-01	BALL BEARING		1
738 21 01-01	BALL BEARING		1

B

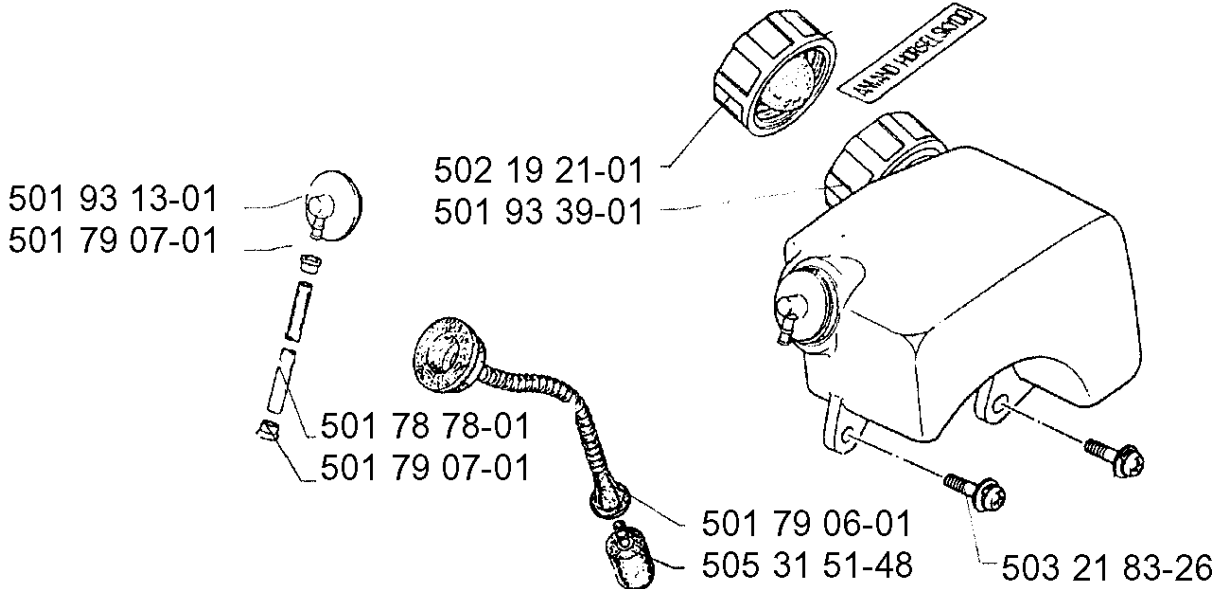


## STARTER

16H, 1990-02

Part No	Description	Remark	QTY KIT
501 78 95-01	RECOIL SPRING		1
501 78 96-01	STARTER PULLEY		1
501 78 97-01	STARTER PULLEY		1
501 78 98-01	SPRING		1
501 79 01-01	PLATE		1
501 79 03-01	STARTER HANDLE		1
501 79 04-01	STARTER CORD		1
501 89 11-01	PAWL		1
501 93 36-01	STARTER HOUSING		1
501 93 37-01	DRIVER		1
501 93 38-01	GROMMET		1
503 21 83-13	SCREW		1
503 21 83-30	SCREW		1
503 21 83-38	SCREW		1

C

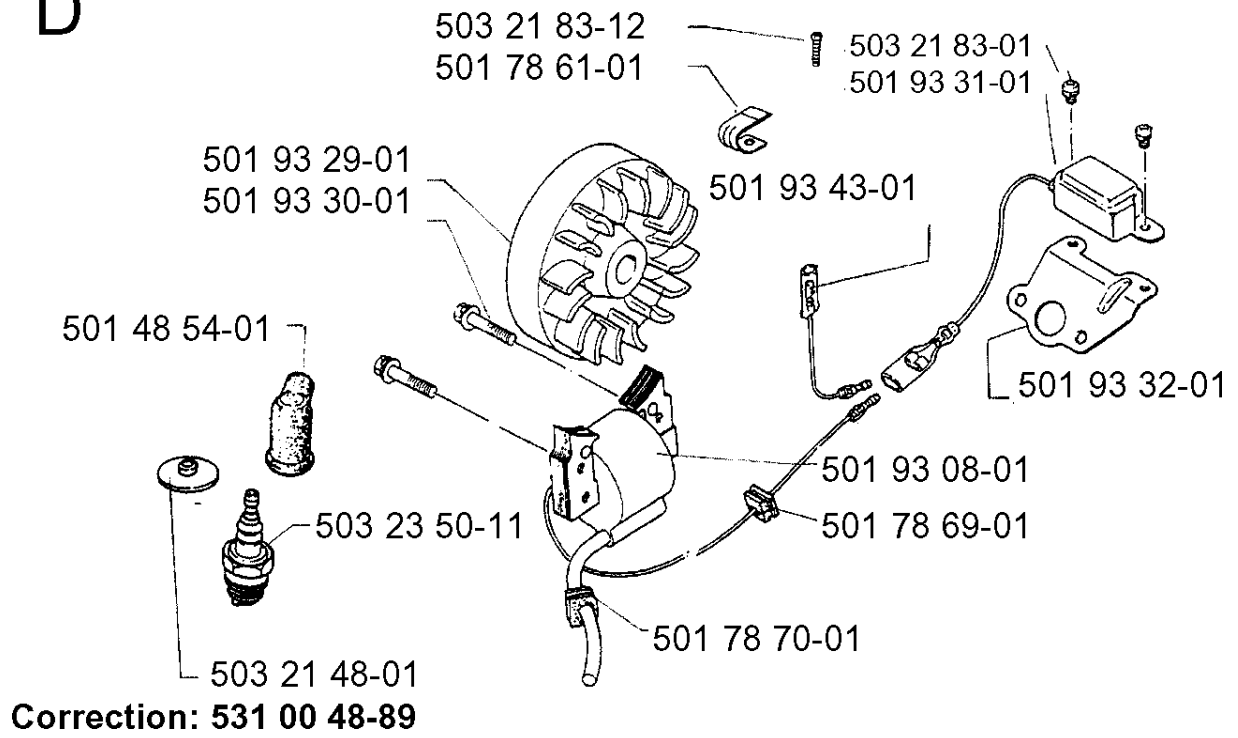


## FUEL TANK

16H, 1990-02

Part No	Description	Remark	QTY KIT
501 78 78-01	PIPE		1
501 79 06-01	FUEL HOSE		1
501 79 07-01	HOSE CLAMP		1
501 79 07-01	HOSE CLAMP		1
501 93 13-01	CONNECTION		1
501 93 39-01	TANK		1
502 19 21-01	TANK CAP		1
503 21 83-26	SCREW		1
505 31 51-48	FUEL FILTER		1

D





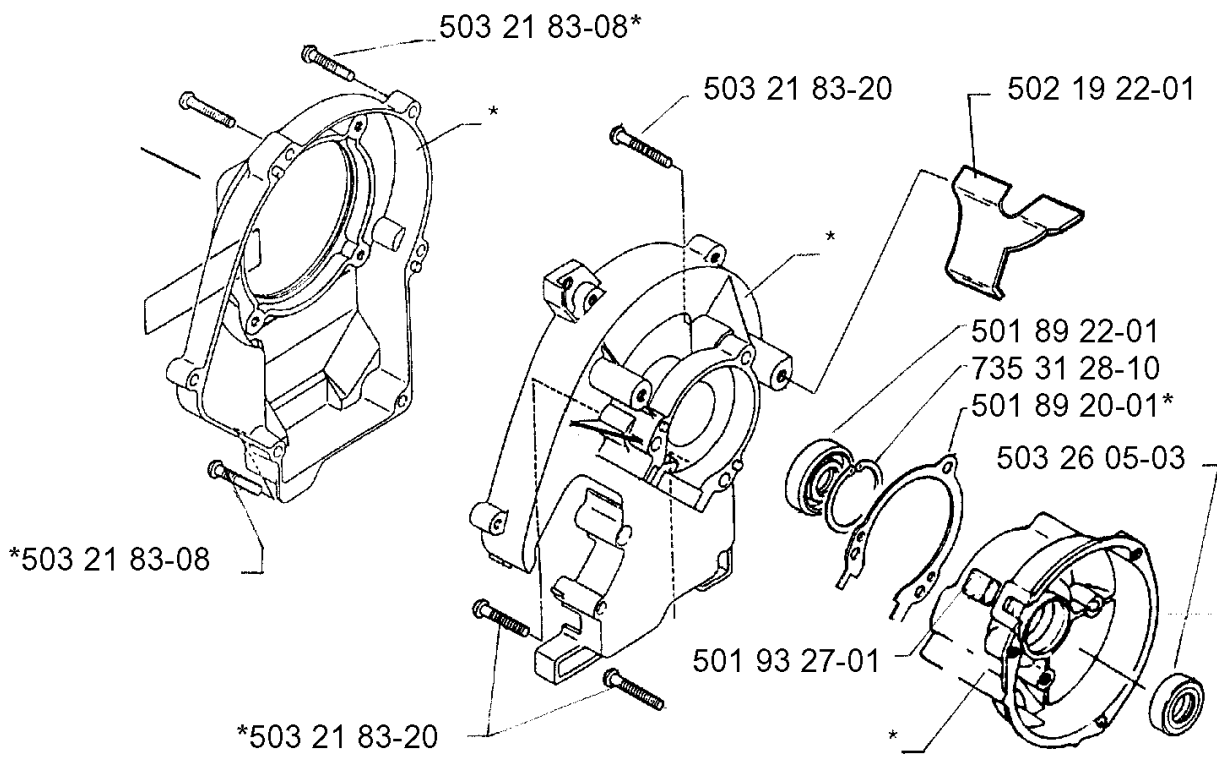
## IGNITION SYSTEM

16H, 1990-02

Part No	Description	Remark	QTY KIT
501 48 54-01	KIT		1
501 78 61-01	CLAMP		1
501 78 69-01	PRIMARY CABLE		1
501 78 70-01	IGNITION CABLE		1
501 93 08-01	IGNITION COIL		1
501 93 29-01	FLYWHEEL		1
501 93 30-01	SCREW		1
501 93 31-01	ELECTRONIC UNIT		1
501 93 32-01	HOLDER		1
501 93 43-01	CABLE		1
503 21 83-01	SCREW		1
503 21 83-12	SCREW		1
503 23 50-11	SPARK PLUG		1
531 00 48-89	PROTECTIVE CAP	CORRECTION:	1

E

\*compl 501 94 75-01

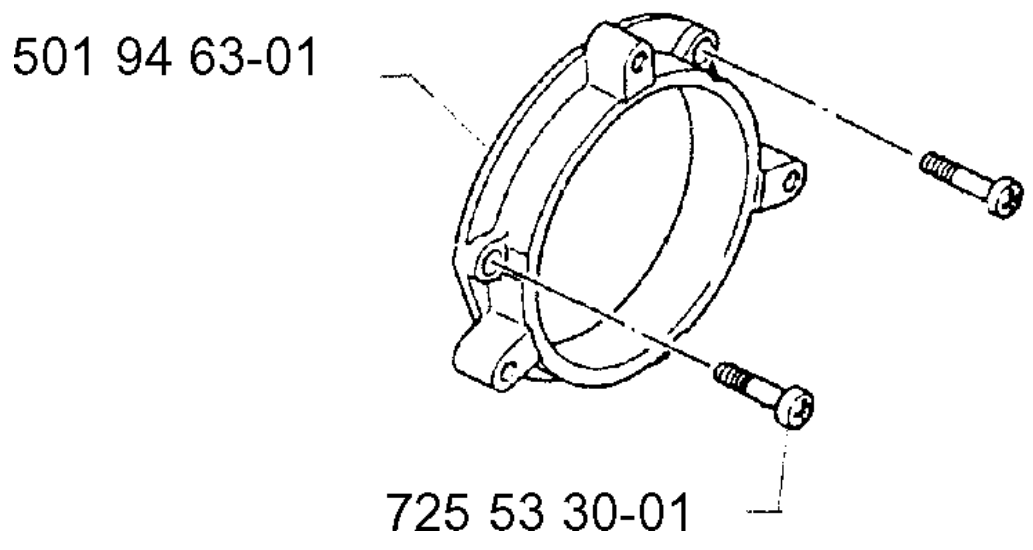
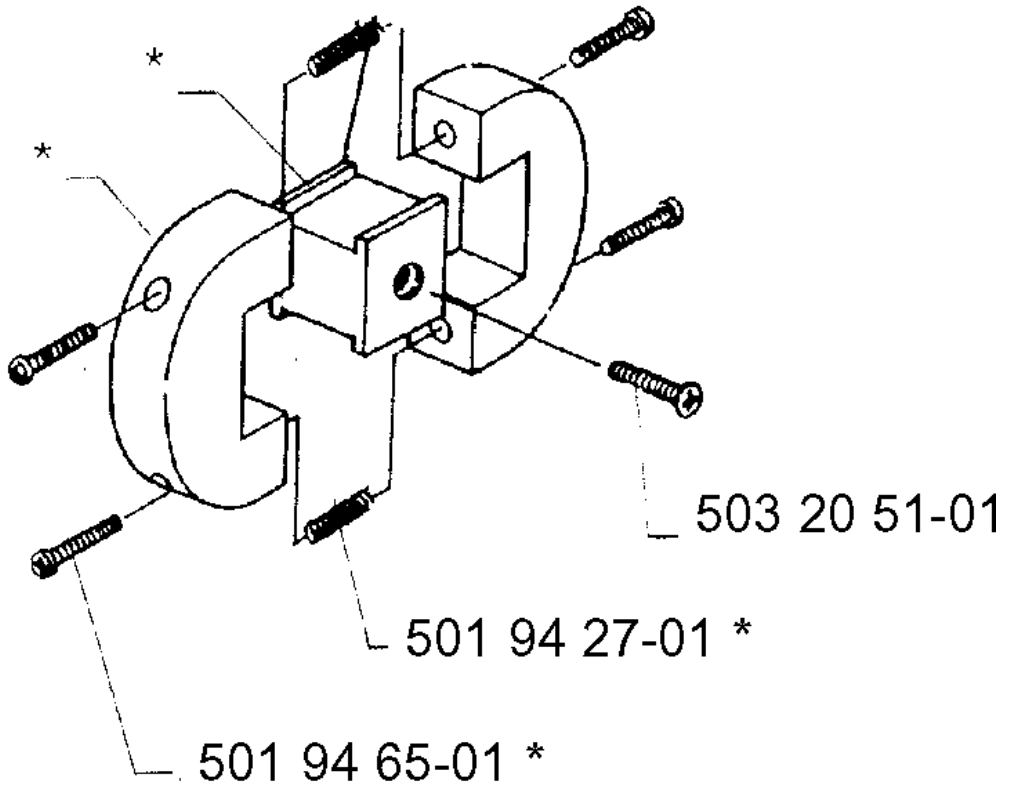


## CRANKCASE

16H, 1990-02

Part No	Description	Remark	QTY KIT
501 89 20-01	CRANKCASE		1
501 89 22-01	SEALING		1
501 93 27-01	SEALING		1
501 94 75-01	CRANKCASE		1
502 19 22-01	PLATE		1
503 21 83-08	SCREW		1
503 21 83-08	SCREW		1
503 21 83-20	SCREW		1
503 21 83-20	SCREW		1
503 26 05-03	SEALING RING		1
735 31 28-10	CIRCLIP		1

# F \*compl 501 94 28-01

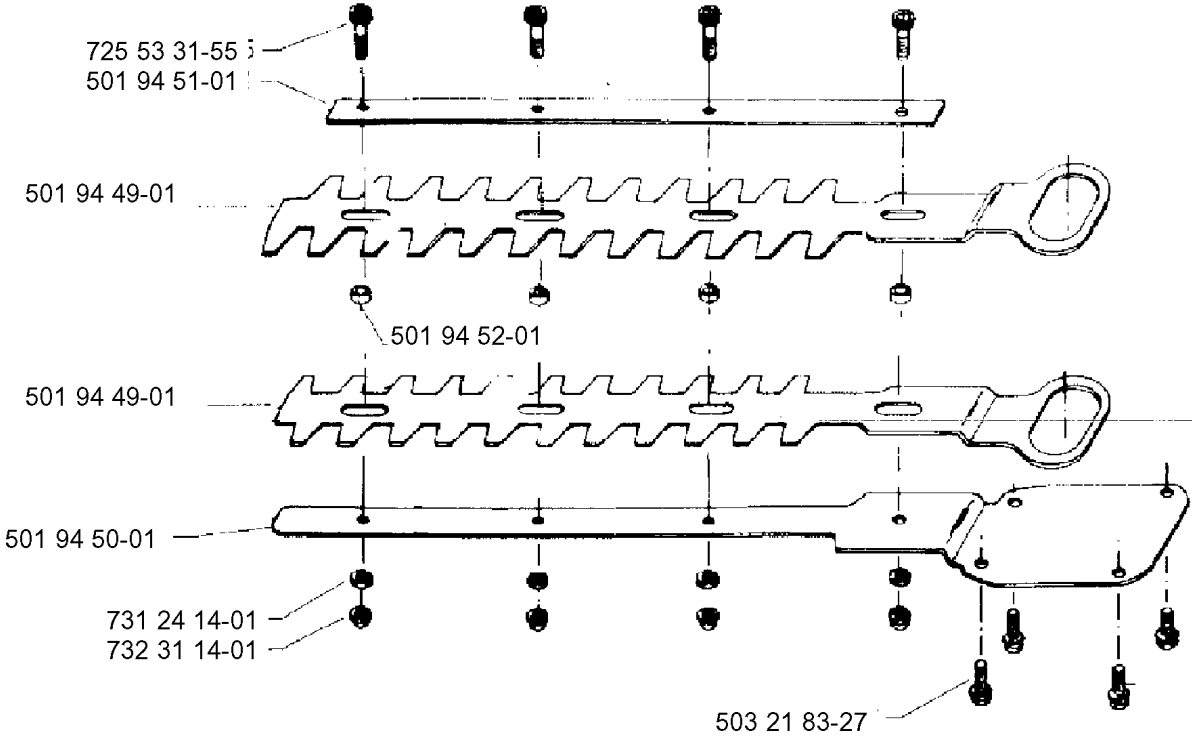


## CLUTCH

16H, 1990-02

Part No	Description	Remark	QTY KIT
501 94 27-01	CLUTCH SPRING		1
501 94 28-01	CLUTCH ASSY		1
501 94 63-01	ENGINE PLATE		1
501 94 65-01	SCREW		1
503 20 51-01	SCREW CRCSFM		1
725 53 30-01			1

G



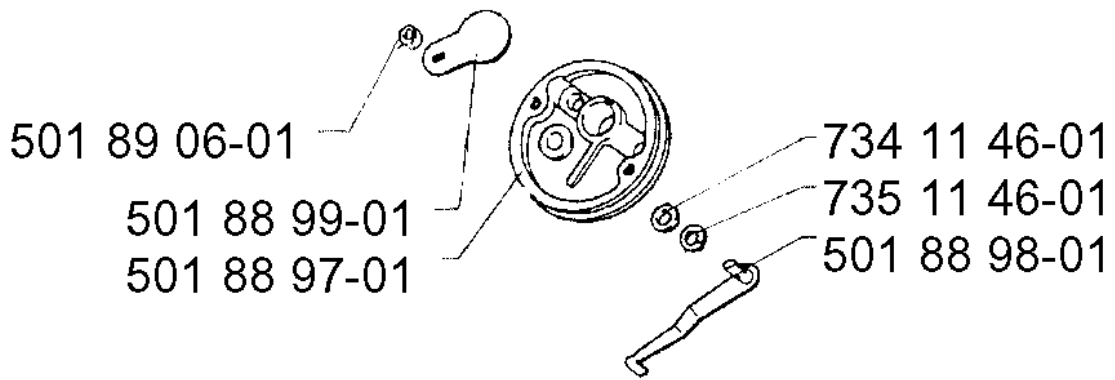
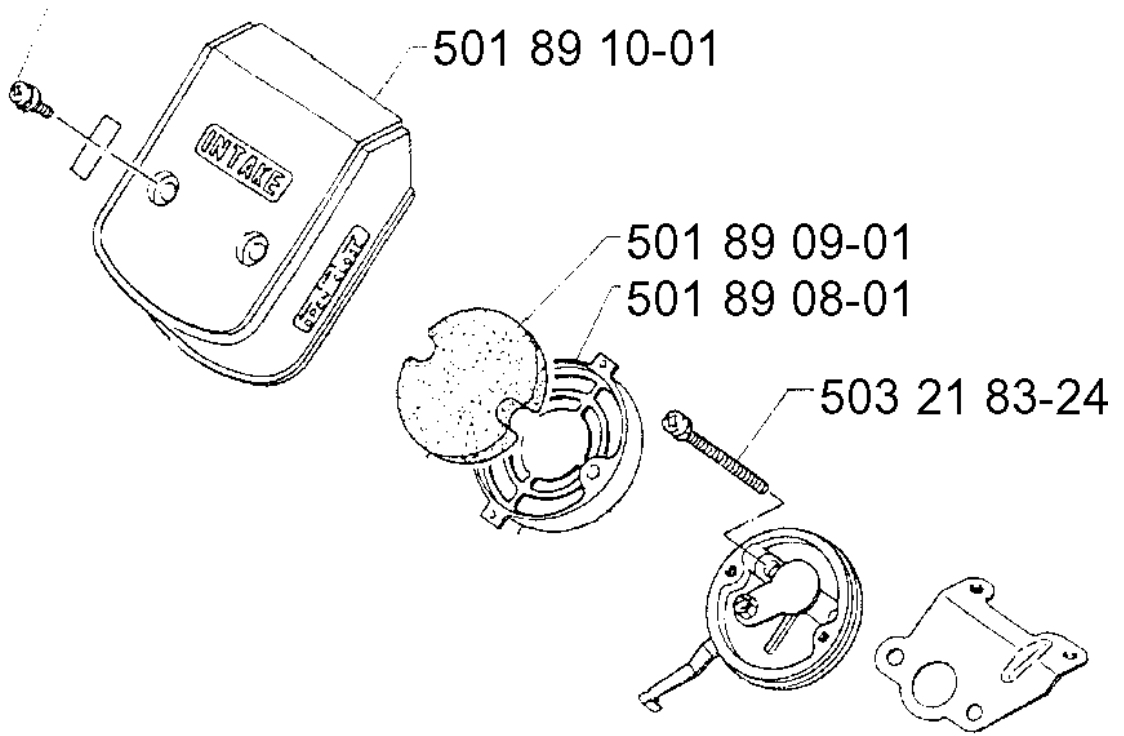
CUTTING EQUIPMENT

16H, 1990-02

Part No	Description	Remark	QTY KIT
501 94 49-01	BLADE		1
501 94 49-01	BLADE		1
501 94 50-01	KNIFE GUIDE		1
501 94 51-01	KNIFE GUIDE		1
501 94 52-01	SLEEVE		1
503 21 83-27	SCREW		1
725 53 31-55	SCREW IHSCM		1
731 24 14-01	NUT		1
732 31 14-01	NUT		1

H

503 21 83-24





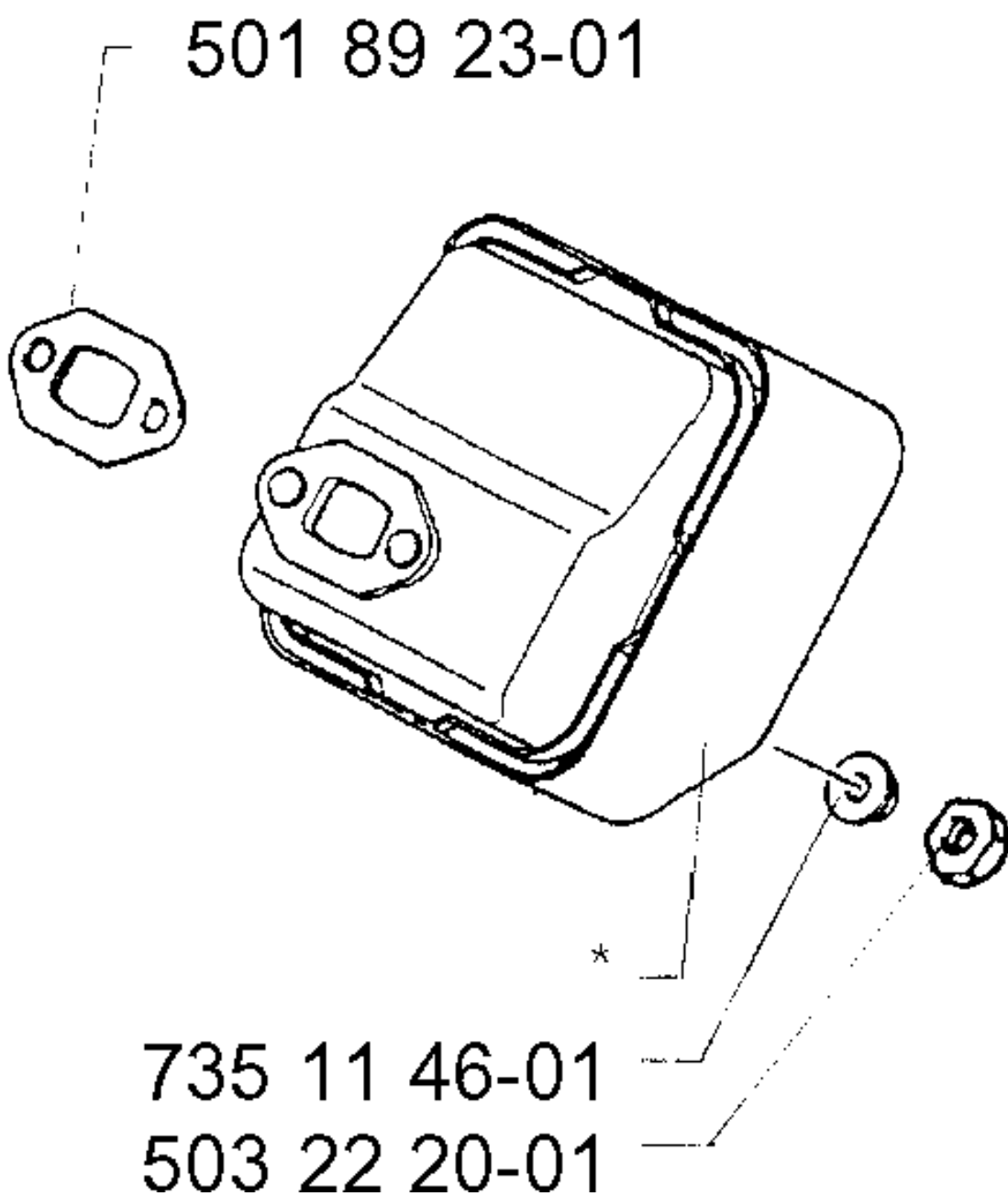
## AIR FILTER

16H, 1990-02

Part No	Description	Remark	QTY KIT
501 88 97-01	FILTER BOTTOM		1
501 88 98-01	CHOKE LEVER		1
501 88 99-01	CHOKE VALVE		1
501 89 06-01	NUT		1
501 89 08-01	FILTER HOLDER		1
501 89 09-01	FILTER		1
501 89 10-01	FILTER COVER		1
503 21 83-24	SCREW		1
503 21 83-24	SCREW		1
734 11 46-01	WASHER		1
735 11 46-01	SPRING WASHER		1

**K**

**\*compl 501 89 33-01**

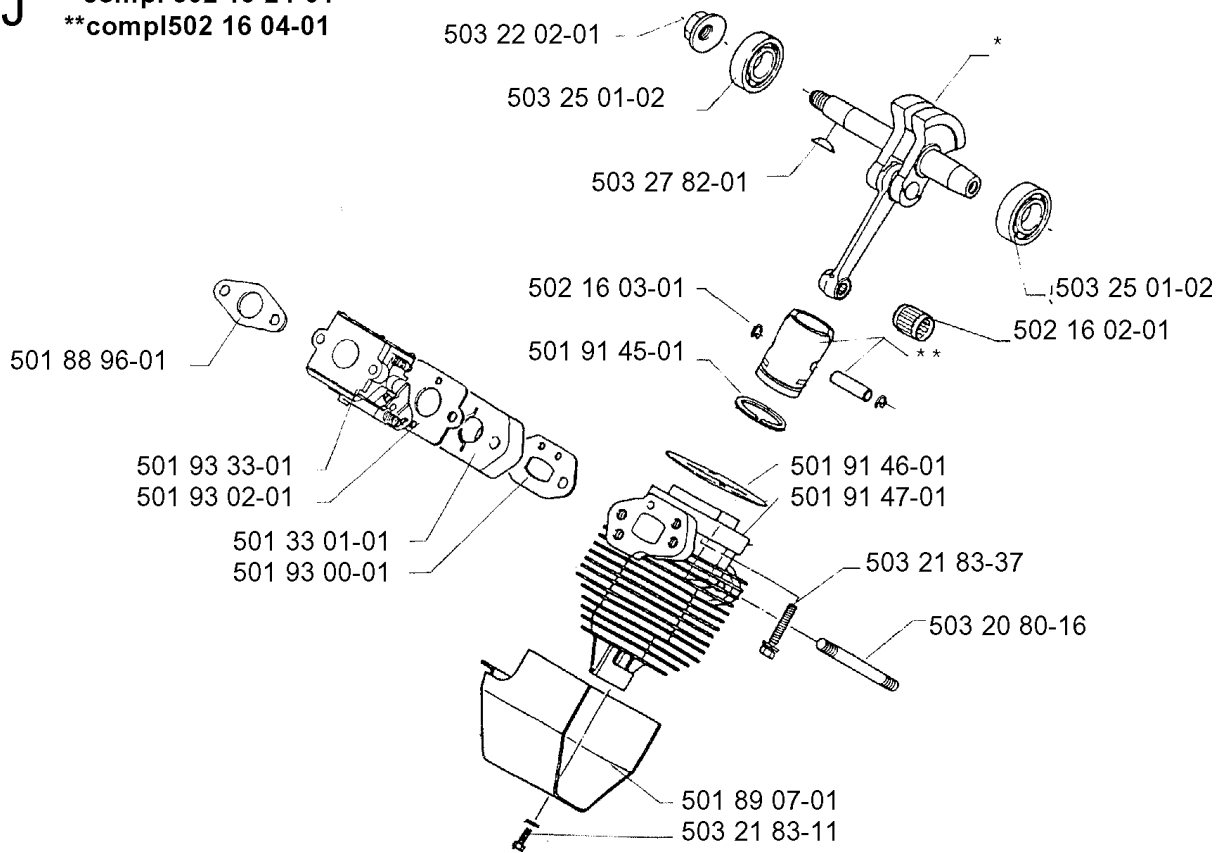


## MUFFLER

16H, 1990-02

Part No	Description	Remark	QTY KIT
501 89 23-01	GASKET MUFFLER		1
501 89 33-01	OIL HOSE		1
503 22 20-01	LOCK NUT		1
735 11 46-01	SPRING WASHER		1

**J** \*compl 502 19 24-01  
\*\*compl 502 16 04-01

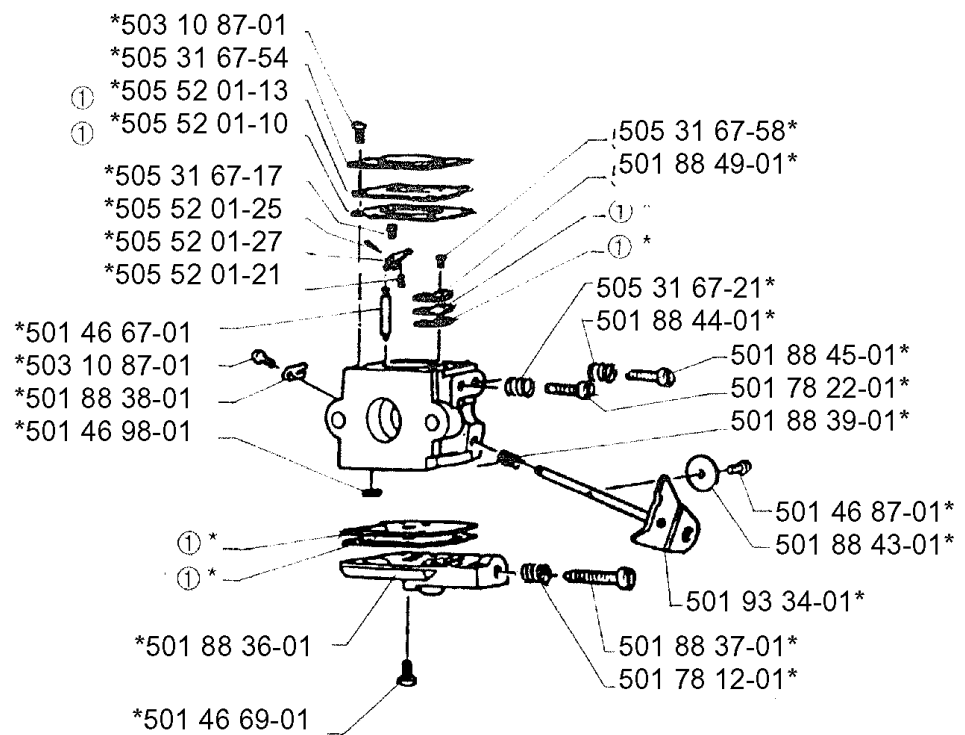


## CYLINDER PISTON

16H, 1990-02

Part No	Description	Remark	QTY KIT
501 33 01-01	ILLUSTRATED PARTS LIST		1
501 88 96-01	GASKET		1
501 89 07-01	CYLINDER COVER		1
501 91 45-01	PISTON RING		1
501 91 46-01	GASKET		1
501 91 47-01	CYLINDER		1
501 93 00-01	GASKET INTAKE		1
501 93 02-01	GASKET		1
501 93 33-01	CARBURETTOR		1
502 16 02-01	SUPPORT BUSHING		1
502 16 03-01	RETAINING RING		1
502 16 04-01	PISTON ASSY		1
502 19 24-01	CRANKSHAFT ASSY		1
503 20 80-16	SCREW PIN		1
503 21 83-11	SCREW		1
503 21 83-37	SCREW		1
503 22 02-01	NUT FLANGE		1
503 25 01-02	BALL BEARING		1
503 25 01-02	BALL BEARING		1
503 27 82-01	KEY		1

L \*compl 501 93 33 -01



① 501 88 34-01  
 Packningssats, förgasare  
 Set of gaskets, carburettor  
 Dichtungssatz, vergaser  
 Jeu de joints, carburateur

## CARBURETOR DETAILS

16H, 1990-02

Part No	Description	Remark	QTY KIT
501 46 67-01	VALVE		1
501 46 69-01	SCREW		1
501 46 87-01	SCREW		1
501 46 98-01	SCREEN		1
501 78 12-01	SPRING		1
501 78 22-01	NEEDLE-HIGH SPEED		1
501 88 36-01	PUMP COVER		1
501 88 37-01	IDLE ADJUSTMENT SCRE		1
501 88 38-01	THROTTLE SHAFT LOCKI		1
501 88 39-01	SPRING		1
501 88 43-01	THROTTLE DISC		1
501 88 44-01	SPRING		1
501 88 45-01	LOW SPEED NEEDLE		1
501 88 49-01	PLATE		1
501 93 33-01	CARBURETTOR		1
501 93 34-01	THROTTLE SHAFT ASSEMBLY		1
503 10 87-01	SCREW		1
503 10 87-01	SCREW		1
505 31 67-17	SCREW		1
505 31 67-21	SPRING		1
505 31 67-54	LOCK STYRMEMBRAN		1
505 31 67-58	SCREW		1
505 52 01-10	GASKET	501 88 34-01 SET OF GASKETS, CARBURETTOR	1
505 52 01-13	STYRMEMBRAN KPL	501 88 34-01 SET OF GASKETS, CARBURETTOR	1
505 52 01-21	SPRING		1
505 52 01-25	PIN		1
505 52 01-27	LEVER		1